



GAT MONTHLY MEMBERSHIP PROGRESS REPORT

Results as of: 2/28/2021

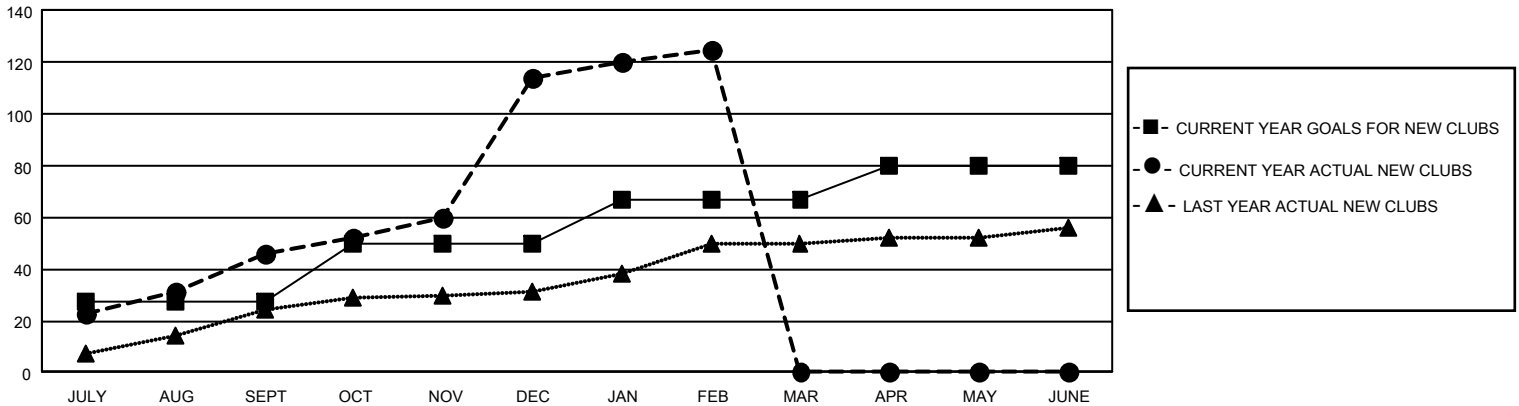
GMT Constitutional Area 6, Group J

REPORT DOES NOT INCLUDE CLUBS IN UNDISTRICTED AREAS.

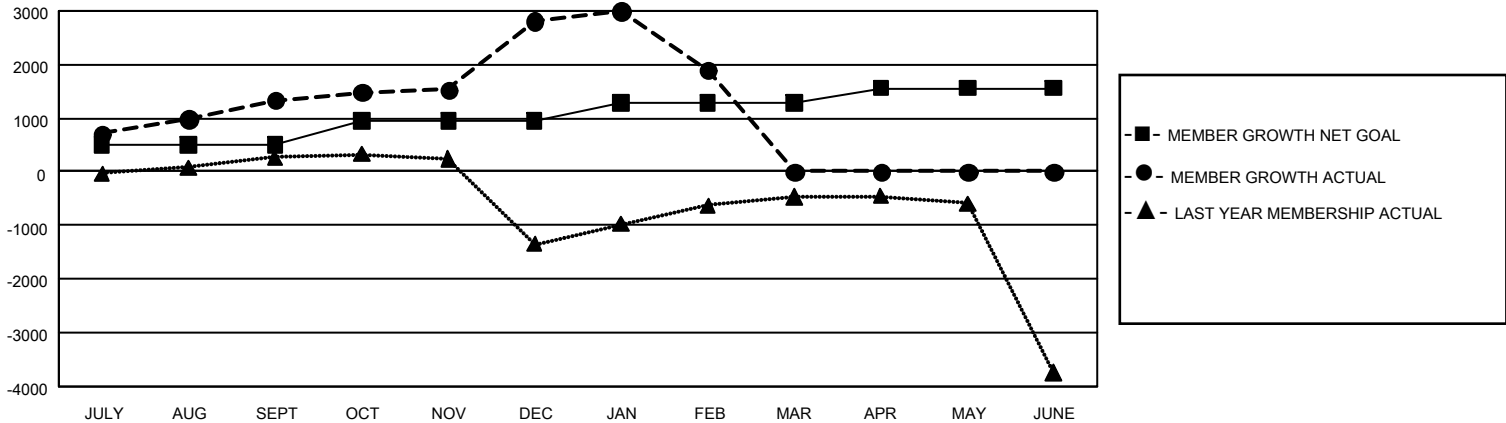
| Clubs | | | |
|-----------------------|---------------|-----------|---------------|
| RESULTS FOR 2020-2021 | | | |
| QUARTER | NEW CLUB GOAL | NEW CLUBS | DROPPED CLUBS |
| JULY/AUG/SEPT | 81 | 46 | 2 |
| OCT/NOV/DEC | 69 | 68 | 1 |
| JAN/FEB/MAR | 51 | 11 | 83 |
| APR/MAY/JUNE | 39 | 0 | 0 |

| Members | | | |
|-----------------------|------------------------|----------------------|--|
| RESULTS FOR 2020-2021 | | | |
| QUARTER | MEMBER GROWTH NET GOAL | MEMBER GROWTH ACTUAL | DROPPED MEMBERS ACTUAL (including transfers) |
| JULY/AUG/SEPT | 499 | 2,251 | 598 |
| OCT/NOV/DEC | 454 | 3,028 | 1,466 |
| JAN/FEB/MAR | 333 | 704 | 1,554 |
| APR/MAY/JUNE | 272 | 0 | 0 |

GOALS AND ACTUAL NEW CLUBS CUMULATIVE



GOALS AND ACTUAL MEMBERS CUMULATIVE



DROPPED CLUBS: 86

534 CLUBS OF 1,155 ADDED 1 OR MORE NEW MEMBERS

GENDER DISTRIBUTION

MALE 21,825 (69.98%)
FEMALE 9,361 (30.02%)

DROPPED MEMBERS

| | |
|----------------|--------------|
| DECEASED | 125 |
| CLUB CANCELLED | 1,394 |
| OTHER | 2,098 |
| TOTAL | 3,617 |

[CLICK HERE FOR CUMULATIVE MEMBERSHIP DATA](#)

TOTAL FAMILY UNIT MEMBERS 17,011

FAMILY MEMBERS PAYING HALF DUES 10,046